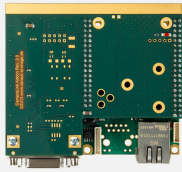


# Camport CL2GigE

Camera Link to GigE Vision converter



## At a Glance

- Connect one base-configuration Camera Link camera to a standard GigE port
- Ultra-low latency and jitter
- Sphinx SDK included
- Compliant with GigE Vision and GenICam standards
- Standard version (with housing) and OEM version (without housing) available
- Standard (0°C to +70°C) and extended (-40°C to +85°C) temperature range

## Benefits

### Real-time video streaming

Stream video and imaging data in real time over standard GigE connections using the industry-standard GigE Vision protocol.

### Use proven Camera Link cameras with GigE ports

#### Long reach: 100 m point-to-point

GigE network segments can be a maximum length of 100 meters (328 feet) using standard Cat 5e or Cat 6 cabling. Using off-the-shelf Ethernet switches and fiber converters, distances can be unlimited.

#### Ultra-low latency

The video from the camera is packetized and transmitted with minimum delay, ensuring the lowest transmission latency.

#### Multicast capability

Multicast capability enables advanced distributed processing and control architectures.

#### Sphinx SDK included

A feature-rich software toolkit that provides the building blocks needed to quickly and easily design high-performance video applications that use minimal CPU resources.

- Filter driver and acquisition library for Windows
- Sample applications, including GigE Vision/Genicam compliant viewer

#### Standard (with housing) and OEM (without housing) versions available

Extended temperature range version available: -40 to +85°C / -40 to +185°F

#### Compatible with 3rd party software

Compatible with 3rd party GigE Vision/Genicam compliant vision software libraries (including MIL, LabView, Halcon, CVB...)

## Applications

### Life Sciences & Medical

- High-definition image acquisition and streaming from Flat Panel Detectors (FPD)
- Standard and high-definition image acquisition for endoscopy applications
- Standard and high-definition image acquisition for dental applications
- Standard and high-definition image acquisition for video-guided surgery applications

### Microscopy

- High-definition image acquisition for offline inspection stations
- High-definition image acquisition for laboratory and measuring microscopes

### Video Monitoring, Surveillance & Security

- High-definition low latency video streaming over IP for remote control
- High-definition low latency video streaming over IP for critical infrastructure
- High-definition low latency video streaming over IP in mines

## Specifications

### Mechanical

Form Factor	Standard and EXT versions: <ul style="list-style-type: none"><li>• Stand-alone device with enclosure</li></ul> OEM and OEM EXT versions: <ul style="list-style-type: none"><li>• Baseboard and camera module assembly</li></ul>
Housing	Standard version only: <ul style="list-style-type: none"><li>• Fanless aluminum housing</li></ul>
Mounting	Standard and EXT versions only: <ul style="list-style-type: none"><li>• Desktop or wall-mount</li></ul>
Connectors	All versions: <ul style="list-style-type: none"><li>• 'CAMERA LINK' on camera module:<ul style="list-style-type: none"><li>– 26-pin Mini Delta Ribbon (MDR) socket</li><li>– Camera Link BASE connector</li></ul></li><li>• 'GIGE' on baseboard module:<ul style="list-style-type: none"><li>– RJ-45 socket</li><li>– GigE Vision device interface</li></ul></li></ul> Standard and EXT versions only: <ul style="list-style-type: none"><li>• 'POWER/IO/RS232':<ul style="list-style-type: none"><li>– 15-pin 2-row high-density female sub-D connector</li><li>– Power input, RS-232, CMOS IO</li></ul></li></ul> OEM and OEM EXT versions only: <ul style="list-style-type: none"><li>• 'POWER/IO/RS232' on baseboard module:<ul style="list-style-type: none"><li>– Molex 53047-1010</li><li>– Power input, CMOS IO</li></ul></li></ul>
Dimensions	Standard version: <ul style="list-style-type: none"><li>• 110 mm x 68 mm x 112 mm</li></ul> OEM version: <ul style="list-style-type: none"><li>• 91.5 mm x 20 mm x 86 mm</li></ul>

Weight	<ul style="list-style-type: none"> <li>• Standard versions: 470 g, 16.6 oz</li> <li>• OEM versions: 80 g, 2.8 oz</li> </ul>
--------	-----------------------------------------------------------------------------------------------------------------------------

## Camera / video inputs

Interface standard(s)	Camera Link
Number of cameras	One Base camera
Maximum aggregated camera data transfer rate	255 MB/s
Camera Link configuration	Base <ul style="list-style-type: none"> <li>• BASE_1T8, BASE_2T8, BASE_3T8</li> <li>• BASE_1T10, BASE_2T10</li> <li>• BASE_1T12, BASE_2T12- BASE_1T12</li> <li>• BASE_1T14</li> <li>• BASE_1T16</li> <li>• BASE_1T24</li> </ul>
Camera Link clock frequency	From 20 MHz up to 85 MHz
PoCL (Power over Camera Link)	No
Camera pixel formats supported	Monochrome, Bayer and RGB (PFNC names): <ul style="list-style-type: none"> <li>• Mono8, Mono10, Mono12, Mono14, Mono16</li> <li>• Bayer&lt;XX&gt;8, Bayer&lt;XX&gt;10, Bayer&lt;XX&gt;12, Bayer&lt;XX&gt;14, Bayer&lt;XX&gt;16 where &lt;XX&gt; = GR, RG, GB, or BG</li> <li>• RGB8</li> </ul>
Maximum image size	8 MB

## Video delivery

Raw video format(s)	Mono8, RGB8, BAYER8, YUV422, YUV444
---------------------	-------------------------------------

## Area-scan camera control

Trigger	Yes
Strobe	No

## On-board processing

On-board memory	<ul style="list-style-type: none"> <li>• CPU: 8 MB</li> <li>• Frame buffer: 24 MB</li> <li>• Flash: 8 MB</li> <li>• EEPROM: 8 kB</li> </ul>
-----------------	---------------------------------------------------------------------------------------------------------------------------------------------

## General Purpose Inputs and Outputs

Number of lines	Four I/O lines: <ul style="list-style-type: none"> <li>• Two inputs</li> <li>• Two outputs</li> </ul>
Electrical specifications	<ul style="list-style-type: none"> <li>• 3.3 V CMOS inputs</li> <li>• 3.3 V 20 mA CMOS outputs</li> </ul>

## Network

LAN interface	Ethernet 10BASE-T/100BASE-TX/1000BASE-T, automatic speed negotiation
LAN connector	RJ45 with link and activity LED indicators
Internet layer protocols	IPv4, UDP and ICMP (ping)

## System integration

COM	One Full-duplex RS-232 COM port, CameraLink serial pass through
-----	-----------------------------------------------------------------

## Electrical

Supply voltage	8 to 15 V DC, power supply via external unit
Power consumption	Standard and EXT versions: <ul style="list-style-type: none"><li>• 3.5 W typical</li></ul> OEM and OEM EXT versions: <ul style="list-style-type: none"><li>• 3.5 W typical</li></ul>

## Software

APIs	Sphinx SDK: <ul style="list-style-type: none"><li>• Filter driver and acquisition library for Windows</li><li>• Sample applications, including GigE Vision/GenICam compliant viewer</li><li>• Driver installation tool</li><li>• Documentation</li></ul>
------	----------------------------------------------------------------------------------------------------------------------------------------------------------------------------------------------------------------------------------------------------------

## Environmental conditions

Operating ambient air temperature	Standard and OEM versions: <ul style="list-style-type: none"><li>• 0 to +70 °C / +32 to +158 °F</li></ul> EXT and OEM EXT versions: <ul style="list-style-type: none"><li>• -40 to +85 °C / -40 to +185 °F</li></ul>
Operating ambient air humidity	Standard and OEM versions: <ul style="list-style-type: none"><li>• TBD</li></ul> EXT and OEM EXT versions: <ul style="list-style-type: none"><li>• TBD</li></ul>
Storage ambient air temperature	Standard and OEM versions: <ul style="list-style-type: none"><li>• TBD</li></ul> EXT and OEM EXT versions: <ul style="list-style-type: none"><li>• TBD</li></ul>
Storage ambient air humidity	Standard and OEM versions: <ul style="list-style-type: none"><li>• TBD</li></ul> EXT and OEM EXT versions: <ul style="list-style-type: none"><li>• TBD</li></ul>

## Certifications

Electromagnetic - EMC standards	To be confirmed: <ul style="list-style-type: none"><li>• European Council EMC Directive 2004/108/EC</li><li>• United States FCC rule 47 CFR 15</li></ul>
EMC - Emission	To be confirmed: <ul style="list-style-type: none"><li>• EN 55022:2010 Class B</li><li>• FCC 47 Part 15 Class B</li></ul>
EMC - Immunity	TBD
Flammability	PCB compliant with UL 94 V-0
RoHS	European Union Directive 2011/65/EU (ROHS2)
REACH	European Union Regulation 1907/2006
WEEE	Must be disposed of separately from normal household waste and must be recycled according to local regulations

## Ordering Information

---

Product code - Description	<ul style="list-style-type: none"><li>• 8112 - Campport CL2GigE</li><li>• 8112-E - Campport CL2GigE (EXT)</li><li>• 8112-O - Campport CL2GigE (OEM)</li><li>• 8112-OE - Campport CL2GigE (OEM) (EXT)</li></ul>
----------------------------	----------------------------------------------------------------------------------------------------------------------------------------------------------------------------------------------------------------

---

Optional accessories	1675 - 12V 40W Power Supply Block
----------------------	-----------------------------------

---



## AMERICA

### **Euresys Inc.**

27126-B Paseo Espada - Suite 704  
San Juan Capistrano, CA 92675 - United States

Phone: +1 949 743 0612

Email: [sales.americas@euresys.com](mailto:sales.americas@euresys.com)

## EMEA

### **Euresys SA**

Liège Science Park - Avenue du Pré Aily, 14  
4031 Angleur - Belgium

Phone: +32 4 367 72 88

Email: [sales.europe@euresys.com](mailto:sales.europe@euresys.com)

## EMEA

### **Sensor to Image GmbH**

Lechtorstrasse 20 -  
86956 Schongau - Germany

Phone: +49 8861 2369 0

Email: [sales.europe@euresys.com](mailto:sales.europe@euresys.com)

## ASIA

### **Euresys Pte. Ltd.**

750A Chai Chee Road - #07-15 Viva Business Park  
Singapore 469001 - Singapore

Phone: +65 6445 4800

Email: [sales.asia@euresys.com](mailto:sales.asia@euresys.com)

## CHINA

### **Euresys Shanghai Liaison Office**

Unit 802, Tower B, Greenland The Center - No.500 Yunjin Road, Xuhui District  
200232 Shanghai - China

Euresys上海联络处

上海市徐汇区云锦路500号绿地汇中心B座802室  
200232

Phone: +86 21 33686220

Email: [sales.china@euresys.com](mailto:sales.china@euresys.com)

## JAPAN

### **Euresys Japan K.K.**

Expert Office Shinyokohama - Nisso Dai 18 Building, Shinyokohama 3-7-18  
Kouhoku-Ku, Yokohama-Shi 222-0033 - Japan

〒222-0033

神奈川県横浜市港北区新横浜3-7-18 日総第18ビル エキスパートオフィス新横浜

Phone: +81 45 594 7259

Email: [sales.japan@euresys.com](mailto:sales.japan@euresys.com)

More at [www.euresys.com](http://www.euresys.com)

