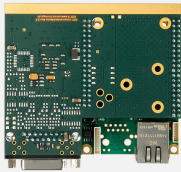


# Camport SDTV2GigE

PAL/NTSC to GigE Vision converter



## At a Glance

- Connect one NTSC/PAL Camera to a standard GigE port
- Ultra-low latency and jitter
- Sphinx SDK included
- Compliant with GigE Vision and GenICam standards
- Standard version (with housing) and OEM version (without housing) available
- Standard (0°C to +70°C) and extended (-40°C to +85°C) temperature range

## Benefits

### Real-time video streaming

Stream video and imaging data in real time over standard GigE connections using the industry-standard GigE Vision protocol.

### Use legacy NTSC/PAL cameras with GigE ports

### Long reach: 100 m point-to-point

GigE network segments can be a maximum length of 100 meters (328 feet) using standard Cat 5e or Cat 6 cabling. Using off-the-shelf Ethernet switches and fiber converters, distances can be unlimited.

### Multicast capability

Multicast capability enables advanced distributed processing and control architectures.

### Sphinx SDK included

A feature-rich software toolkit that provides the building blocks needed to quickly and easily design high-performance video applications that use minimal CPU resources.

- Filter driver and acquisition library for Windows
- Sample applications, including GigE Vision/Genicam compliant viewer

### Compatible with 3rd party software

Compatible with 3rd party GigE Vision/Genicam compliant vision software libraries (including MIL, LabView, Halcon, CVB...)

Extended temperature range version available: -40 to +85°C / -40 to +185°F

Standard (with housing) and OEM (without housing) versions available

## Applications

### Life Sciences & Medical

- High-definition image acquisition and streaming from Flat Panel Detectors (FPD)
- Standard and high-definition image acquisition for dental applications
- Standard and high-definition image acquisition for video-guided surgery applications

### Microscopy

- High-definition image acquisition for offline inspection stations
- High-definition image acquisition for laboratory and measuring microscopes

### Video Monitoring, Surveillance & Security

- High-definition low latency video streaming over IP for remote control
- High-definition low latency video streaming over IP for critical infrastructure
- High-definition low latency video streaming over IP in mines

## Specifications

### Mechanical

Form Factor	Standard and EXT versions: <ul style="list-style-type: none"><li>• Stand-alone device with enclosure</li></ul> OEM and OEM EXT versions: <ul style="list-style-type: none"><li>• Baseboard and camera module assembly</li></ul>
Housing	Standard version only: <ul style="list-style-type: none"><li>• Fanless aluminum housing</li></ul>
Mounting	Standard and EXT versions only: <ul style="list-style-type: none"><li>• Desktop or wall-mount</li></ul>
Connectors	All versions: <ul style="list-style-type: none"><li>• 'SDTV' on camera module:<ul style="list-style-type: none"><li>– 15-pin 2-row sub-D connector</li><li>– CVBS input</li></ul></li><li>• 'GIGE' on baseboard module:<ul style="list-style-type: none"><li>– RJ-45 socket</li><li>– GigE Vision device interface</li></ul></li></ul> Standard and EXT versions only: <ul style="list-style-type: none"><li>• 'POWER/IO/RS232':<ul style="list-style-type: none"><li>– 15-pin 2-row high-density female sub-D connector</li><li>– Power input, RS-232, CMOS IO</li></ul></li></ul> OEM and OEM EXT versions only: <ul style="list-style-type: none"><li>• 'POWER/IO/RS232' on baseboard module:<ul style="list-style-type: none"><li>– Molex 53047-1010</li><li>– Power input, CMOS IO</li></ul></li></ul>
Dimensions	Standard version: <ul style="list-style-type: none"><li>• 110 mm x 68 mm x 112 mm</li></ul> OEM version: <ul style="list-style-type: none"><li>• 91.5 mm x 20 mm x 86 mm</li></ul>
Weight	<ul style="list-style-type: none"><li>• Standard versions: 470 g, 16.6 oz</li><li>• OEM versions: 80 g, 2.8 oz</li></ul>

### Camera / video inputs

Interface standard(s)	NTSC-M, PAL-B/G, RS-170, CCIR
-----------------------	-------------------------------

Termination resistor	Yes, not removable
Number of cameras	One Composite Video Base Band (CVBS) camera
A/D converter	One, 8-bit

## Video delivery

Raw video format(s)	Mono8, RGB8, BAYER8, YUV422, YUV444
---------------------	-------------------------------------

## Area-scan camera control

Trigger	No
Strobe	No

## On-board processing

On-board memory	<ul style="list-style-type: none"> <li>• CPU: 8 MB</li> <li>• Frame buffer: 24 MB</li> <li>• Flash: 8 MB</li> <li>• EEPROM: 8 kB</li> </ul>
Video	Deinterlacing using the 'weave' method
Input LUT (Lookup Table)	No

## General Purpose Inputs and Outputs

Number of lines	Four I/O lines: <ul style="list-style-type: none"> <li>• Two inputs</li> <li>• Two outputs</li> </ul>
Electrical specifications	<ul style="list-style-type: none"> <li>• 3.3 V CMOS inputs</li> <li>• 3.3 V 20 mA CMOS outputs</li> </ul>

## Network

LAN interface	Ethernet 10BASE-T/100BASE-TX/1000BASE-T, automatic speed negotiation
LAN connector	RJ45 with link and activity LED indicators
Internet layer protocols	IPv4, UDP and ICMP (ping)

## System integration

COM	One Full-duplex RS-232 COM port
-----	---------------------------------

## Electrical

Supply voltage	8 to 15 V DC, power supply via external unit
Power consumption	Standard and EXT versions: <ul style="list-style-type: none"> <li>• 3.5 W typical</li> </ul> OEM and OEM EXT versions: <ul style="list-style-type: none"> <li>• 3.5 W typical</li> </ul>

## Software

APIs	Sphinx SDK: <ul style="list-style-type: none"> <li>• Filter driver and acquisition library for Windows</li> <li>• Sample applications, including GigE Vision/GenICam compliant viewer</li> <li>• Driver installation tool</li> <li>• Documentation</li> </ul>
------	---

## Environmental conditions

---

Operating ambient air temperature	Standard and OEM versions: <ul style="list-style-type: none"><li>• 0 to +70 °C / +32 to +158 °F</li></ul> EXT and OEM EXT versions: <ul style="list-style-type: none"><li>• -40 to +85 °C / -40 to +185 °F</li></ul>
-----------------------------------	--

---

Operating ambient air humidity	Standard and OEM versions: <ul style="list-style-type: none"><li>• TBD</li></ul> EXT and OEM EXT versions: <ul style="list-style-type: none"><li>• TBD</li></ul>
--------------------------------	--

---

Storage ambient air temperature	Standard and OEM versions: <ul style="list-style-type: none"><li>• TBD</li></ul> EXT and OEM EXT versions: <ul style="list-style-type: none"><li>• TBD</li></ul>
---------------------------------	--

---

Storage ambient air humidity	Standard and OEM versions: <ul style="list-style-type: none"><li>• TBD</li></ul> EXT and OEM EXT versions: <ul style="list-style-type: none"><li>• TBD</li></ul>
------------------------------	--

---

## Certifications

---

Electromagnetic - EMC standards	To be confirmed: <ul style="list-style-type: none"><li>• European Council EMC Directive 2004/108/EC</li><li>• United States FCC rule 47 CFR 15</li></ul>
---------------------------------	--

---

EMC - Emission	To be confirmed: <ul style="list-style-type: none"><li>• EN 55022:2010 Class B</li><li>• FCC 47 Part 15 Class B</li></ul>
----------------	---

---

EMC - Immunity	TBD
----------------	-----

---

Flammability	PCB compliant with UL 94 V-0
--------------	------------------------------

---

RoHS	European Union Directive 2011/65/EU (ROHS2)
------	---

---

REACH	European Union Regulation 1907/2006
-------	-------------------------------------

---

WEEE	Must be disposed of separately from normal household waste and must be recycled according to local regulations
------	--

---

## Ordering Information

---

Product code - Description	<ul style="list-style-type: none"><li>• 8110 - Campport SDTV2GigE</li><li>• 8110-E - Campport SDTV2GigE (EXT)</li><li>• 8110-O - Campport SDTV2GigE (OEM)</li><li>• 8110-OE - Campport SDTV2GigE (OEM) (EXT)</li></ul>
----------------------------	--

---

Optional accessories	1675 - 12V 40W Power Supply Block
----------------------	-----------------------------------

---



## AMERICA

### **Euresys Inc.**

27126-B Paseo Espada - Suite 704  
San Juan Capistrano, CA 92675 - United States  
Phone: +1 949 743 0612  
Email: sales.americas@euresys.com

## EMEA

### **Euresys SA**

Liège Science Park - Avenue du Pré Aily, 14  
4031 Angleur - Belgium  
Phone: +32 4 367 72 88  
Email: sales.europe@euresys.com

## EMEA

### **Sensor to Image GmbH**

Lechtorstrasse 20 -  
86956 Schongau - Germany  
Phone: +49 8861 2369 0  
Email: sales.europe@euresys.com

## ASIA

### **Euresys Pte. Ltd.**

750A Chai Chee Road - #07-15 Viva Business Park  
Singapore 469001 - Singapore  
Phone: +65 6445 4800  
Email: sales.asia@euresys.com

## CHINA

### **Euresys Shanghai Liaison Office**

Unit 802, Tower B, Greenland The Center - No.500 Yunjin Road, Xuhui District  
200232 Shanghai - China  
Euresys上海联络处  
上海市徐汇区云锦路500号绿地汇中心B座802室  
200232  
Phone: +86 21 33686220  
Email: sales.china@euresys.com

## JAPAN

### **Euresys Japan K.K.**

Expert Office Shinyokohama - Nisso Dai 18 Building, Shinyokohama 3-7-18  
Kouhoku-Ku, Yokohama-Shi 222-0033 - Japan  
〒222-0033  
神奈川県横浜市港北区新横浜3-7-18 日総第18ビル エキスパートオフィス新横浜  
Phone: +81 45 594 7259  
Email: sales.japan@euresys.com

More at [www.euresys.com](http://www.euresys.com)

