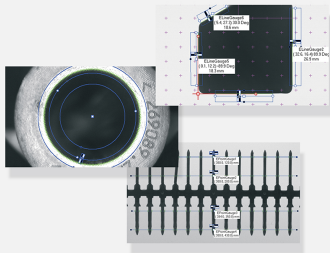




EasyGauge

Sub-pixel measurement & dimension control library



At a Glance

- Sub-pixel point location and edge fitting
- Highly accurate and robust
- Advanced and automatic calibration
- Multiple gauge models
- Measurement of position, orientation, size, curvature, distance
- Interaction through graphical interface

Benefits

Open eVision Studio: Evaluation, prototyping and development tool

Open eVision Studio is the evaluation, prototyping and development tool of Open eVision. Its intuitive graphical user interface allows you to call and immediately see the result of any of eVision's functions. A scripting function generates the corresponding code, which can then be copied and pasted into your application.

Open eVision Studio is free (when using Open eVision 2.0 and above) and can be downloaded to evaluate the performance of Open eVision.

EasyGauge Description

EasyGauge is a cutting-edge measurement and dimension control library for use in gauging and metrology applications.

By relying on proven sub-pixel edge detection and shape fitting algorithms, it allows determining the dimension, position, curvature, size, angle or diameter of manufactured parts with an excellent accuracy.

Robustness is ensured by powerful edge-point selection mechanisms that are intuitive and easy to tune, allowing measurement in cluttered images.

In addition, EasyGauge also supports the automatic measurement of parallel sides, thus providing means of measuring the thickness of flat or bent objects, as well as the precise location of corners.

Advanced and Automatic Calibration

EasyGauge features advanced built-in calibration capabilities to transparently convert pixel measurements to physical units; this relieves the user of the need to convert coordinates. Non-square pixels and rotated coordinate axis are supported. EasyGauge also provides means to determine and correct perspective and optical distortion, with no performance loss.

Gauge Grouping

EasyGauge supports grouping of the measurement gauges and lets these groups track the measured items in the image. These can freely translate and/or rotate while the probes are repositioned accordingly. Derived measurements such as distances between feature points can then be computed.

Choose the most suitable Licensing System

- Open eVision Dongle-based Licenses: Dongle-based Licenses offer the flexibility to be transferred from a PC to another. To purchase a Dongle-based License, select one of the Euresys dongles (USB or Parallel) plus the license(s) to be stored on this dongle. Licenses are delivered as activation codes, which are stored on the dongles.
- Open eVision Software-based Licenses: Software-based licenses do not require any dongle, they are linked to the PC on which they have been activated. Licenses are delivered as activation codes and can be managed online.

Applications

Machine Vision for the Electronic Manufacturing Industry

- Lead inspection
- LED inspection

Machine Vision for the General Manufacturing Industries

- Checking dimensional accuracy
- Assembly inspection

Specifications

Software

Host PC Operating System

- Open eVision is a set of 32-bit and 64-bit libraries that require a processor compatible with the SSE2 instruction set.
 - The EasyDeepLearning library is only available in the 64-bit Open eVision library.
 - Open eVision can be used on the following operating systems:
 - Windows 10 (32- and 64-bits)
 - Windows 8 (32- and 64-bits)
 - Windows 7 (32- and 64-bits)
 - Since Open eVision 2.6, discontinued support of:
 - Windows Vista 32-bits Service Pack 1
 - Windows XP 32-bits Service Pack 3
 - Windows Embedded Standard 2009 32-bits
 - The Open eVision installer does not allow installation on virtual machines.
 - Minimum requirements:
 - RAM: 8 GB
 - Display size: 800 x 600. 1280 x 1024 recommended.
 - Color depth: 16 bits. 32 bits recommended.
 - Between 100 MB and 2 GB free hard disk space for libraries, depending on selected options.
-

APIs

- Supported Integrated Development Environments and Programming Languages:
 - Microsoft Visual Studio .NET 2003 SP1 (C++)
 - Microsoft Visual Studio 2005 SP1 (C++, C#, VB .NET, C++/CLI)
 - Microsoft Visual Studio 2008 SP1 (C++, C#, VB .NET, C++/CLI)
 - Microsoft Visual Studio 2010 (C++, C#, VB .NET, C++/CLI)
 - Microsoft Visual Studio 2012 (C++, C#, VB .NET, C++/CLI)
 - Microsoft Visual Studio 2013 (C++, C#, VB .NET, C++/CLI)
 - Microsoft Visual Studio 2015 (C++, C#, VB .NET, C++/CLI)
 - Microsoft Visual Studio 2017 (C++, C#, VB .NET, C++/CLI)
- Since Open eVision 2.6, discontinued support of:
 - Microsoft Visual Studio 6.0 SP6 (C++, Basic)
 - Borland C++ Builder 6.0 update 4 (C++)
 - CodeGear C++ Builder 2009 (C++)
 - CodeGear Delphi 2009 (Object Pascal)
 - Embarcadero RAD Studio XE4 (C++, Object Pascal)
 - Embarcadero RAD Studio XE5 (C++, Object Pascal)

Ordering Information

Product code - Description

- 4009 - EasyGauge for USB dongle
- 4059 - EasyGauge for PAR dongle
- 4109 - EasyGauge for board licensing
- 4159 - Open EasyGauge for USB dongle
- 4209 - Open EasyGauge for PAR dongle
- 4259 - Open EasyGauge for soft-based licensing

Optional accessories

- 6512 - eVision/Open eVision USB Dongle (empty)
 - 6513 - eVision/Open eVision Parallel Dongle (empty)
-



AMERICA

Euresys Inc.

27126-B Paseo Espada - Suite 704
San Juan Capistrano, CA 92675 - United States
Phone: +1 949 743 0612
Email: sales.americas@euresys.com

EMEA

Euresys SA

Liège Science Park - Avenue du Pré Aily, 14
4031 Angleur - Belgium
Phone: +32 4 367 72 88
Email: sales.europe@euresys.com

EMEA

Sensor to Image GmbH

Lechtorstrasse 20 -
86956 Schongau - Germany
Phone: +49 8861 2369 0
Email: sales.europe@euresys.com

ASIA

Euresys Pte. Ltd.

750A Chai Chee Road - #07-15 Viva Business Park
Singapore 469001 - Singapore
Phone: +65 6445 4800
Email: sales.asia@euresys.com

CHINA

Euresys Shanghai Liaison Office

Unit 802, Tower B, Greenland The Center - No.500 Yunjin Road, Xuhui District
200232 Shanghai - China
Euresys上海联络处
上海市徐汇区云锦路500号绿地汇中心B座802室
200232
Phone: +86 21 33686220
Email: sales.china@euresys.com

JAPAN

Euresys Japan K.K.

Expert Office Shinyokohama - Nisso Dai 18 Building, Shinyokohama 3-7-18
Kouhoku-Ku, Yokohama-Shi 222-0033 - Japan
〒222-0033
神奈川県横浜市港北区新横浜3-7-18 日総第18ビル エキスパートオフィス新横浜
Phone: +81 45 594 7259
Email: sales.japan@euresys.com

More at www.euresys.com

