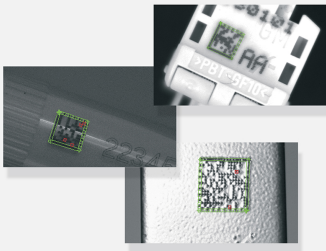




# EasyMatrixCode

2D data matrix code reading library



## At a Glance

- Automatic detection of the code in the image
- Decodes ECC200, ECC000, ECC050, ECC080, ECC100 and ECC140 codes
- Computes quality indicators as per ANSI/AIM, ISO/IEC 15415, ISO/IEC TR 29158 and SEMI T10-0701 standards
- Very fast operation
- Impressive robustness to noise, blur and distortion
- NEW: Support of GS1 Data Matrix codes

## Benefits

### Open eVision Studio: Evaluation, prototyping and development tool

Open eVision Studio is the evaluation, prototyping and development tool of Open eVision. Its intuitive graphical user interface allows you to call and immediately see the result of any of eVision's functions. A scripting function generates the corresponding code, which can then be copied and pasted into your application.

Open eVision Studio is free (when using Open eVision 2.0 and above) and can be downloaded to evaluate the performance of Open eVision.

### EasyMatrixCode Description

Data Matrix codes are widely used for parcel tracking and part identification in the semiconductor, pharmaceutical and mechanical industries.

EasyMatrixCode is a fully automatic reader of 2D Data Matrix codes. It recognizes symbols of any size, contrast, location and orientation in a single operation. Error detection and correction algorithms are used to provide a reliable reading.

EasyMatrixCode is fully compatible with the ANSI/AIM BC11-1997 standard.

### Automatic recognition

As an automatic library, a learning phase is not required, but it is optional. Some characteristics of the matrix code may be set manually in order to restrict the search and accelerate the process. These characteristics are: the family of the matrix code, the number of cells, the cells color, whether flipping is allowed or not.

### Impressive robustness to noise, blur and distortion

EasyMatrixCode can be used in the most demanding situation. It has been designed to fulfill the most difficult application cases such as:

- Bad illumination conditions: non-uniform contrast, under- or over-exposed images
- Bad images resulting from printing or optical defects: blurred Data Matrix codes, anisotropic and non-uniform scaling, noisy images, skewed images

- Hard-to-detect codes: small-size codes, codes on a textured background, resulting from dot peening, laser marking, ink jet printing or electro-chemical etching on various materials.

### Print quality verification

EasyMatrixCode inspects the quality of the data matrix code and computes the indicators as defined by the ANSI/AIM, ISO/IEC 15415, ISO/IEC TR 29158 and SEMI T10-0701 standards.

### Choose the most suitable Licensing System

- Open eVision Dongle-based Licenses: Dongle-based Licenses offer the flexibility to be transferred from a PC to another. To purchase a Dongle-based License, select one of the Euresys dongles (USB or Parallel) plus the license(s) to be stored on this dongle. Licenses are delivered as activation codes, which are stored on the dongles.
- Open eVision Software-based Licenses: Software-based licenses do not require any dongle, they are linked to the PC on which they have been activated. Licenses are delivered as activation codes and can be managed online.

## Applications

### Machine Vision for the General Manufacturing Industries

- Product identification for traceability
- Code quality verification for label printing machines

### Machine Vision for the Printing Industry

- Label and packaging inspection: Inspection of the quality of the printing of characters and codes

## Specifications

### Software

#### Host PC Operating System

- Open eVision is a set of 32-bit and 64-bit libraries that require a processor compatible with the SSE2 instruction set.
- The EasyDeepLearning library is only available in the 64-bit Open eVision library.
- Open eVision can be used on the following operating systems:
  - Windows 10 (32- and 64-bits)
  - Windows 8 (32- and 64-bits)
  - Windows 7 (32- and 64-bits)
- Since Open eVision 2.6, discontinued support of:
  - Windows Vista 32-bits Service Pack 1
  - Windows XP 32-bits Service Pack 3
  - Windows Embedded Standard 2009 32-bits
- The Open eVision installer does not allow installation on virtual machines.
- Minimum requirements:
  - RAM: 8 GB
  - Display size: 800 x 600. 1280 x 1024 recommended.
  - Color depth: 16 bits. 32 bits recommended.
  - Between 100 MB and 2 GB free hard disk space for libraries, depending on selected options.

## APIs

- Supported Integrated Development Environments and Programming Languages:
  - Microsoft Visual Studio .NET 2003 SP1 (C++)
  - Microsoft Visual Studio 2005 SP1 (C++, C#, VB .NET, C++/CLI)
  - Microsoft Visual Studio 2008 SP1 (C++, C#, VB .NET, C++/CLI)
  - Microsoft Visual Studio 2010 (C++, C#, VB .NET, C++/CLI)
  - Microsoft Visual Studio 2012 (C++, C#, VB .NET, C++/CLI)
  - Microsoft Visual Studio 2013 (C++, C#, VB .NET, C++/CLI)
  - Microsoft Visual Studio 2015 (C++, C#, VB .NET, C++/CLI)
  - Microsoft Visual Studio 2017 (C++, C#, VB .NET, C++/CLI)
- Since Open eVision 2.6, discontinued support of:
  - Microsoft Visual Studio 6.0 SP6 (C++, Basic)
  - Borland C++ Builder 6.0 update 4 (C++)
  - CodeGear C++ Builder 2009 (C++)
  - CodeGear Delphi 2009 (Object Pascal)
  - Embarcadero RAD Studio XE4 (C++, Object Pascal)
  - Embarcadero RAD Studio XE5 (C++, Object Pascal)

---

## Ordering Information

---

### Product code - Description

- 4007 - EasyMatrixCode for USB dongle
- 4057 - EasyMatrixCode for PAR dongle
- 4107 - EasyMatrixCode for board licensing
- 4157 - Open EasyMatrixCode for USB dongle
- 4207 - Open EasyMatrixCode for PAR dongle
- 4257 - Open EasyMatrixCode for soft-based licensing

---

### Optional accessories

- 6512 - eVision/Open eVision USB Dongle (empty)
  - 6513 - eVision/Open eVision Parallel Dongle (empty)
-



## AMERICA

### **Euresys Inc.**

27126-B Paseo Espada - Suite 704  
San Juan Capistrano, CA 92675 - United States

Phone: +1 949 743 0612

Email: [sales.americas@euresys.com](mailto:sales.americas@euresys.com)

## EMEA

### **Euresys SA**

Liège Science Park - Avenue du Pré Aily, 14  
4031 Angleur - Belgium

Phone: +32 4 367 72 88

Email: [sales.europe@euresys.com](mailto:sales.europe@euresys.com)

## EMEA

### **Sensor to Image GmbH**

Lechtorstrasse 20 -  
86956 Schongau - Germany

Phone: +49 8861 2369 0

Email: [sales.europe@euresys.com](mailto:sales.europe@euresys.com)

## ASIA

### **Euresys Pte. Ltd.**

750A Chai Chee Road - #07-15 Viva Business Park  
Singapore 469001 - Singapore

Phone: +65 6445 4800

Email: [sales.asia@euresys.com](mailto:sales.asia@euresys.com)

## CHINA

### **Euresys Shanghai Liaison Office**

Unit 802, Tower B, Greenland The Center - No.500 Yunjin Road, Xuhui District  
200232 Shanghai - China

Euresys上海联络处

上海市徐汇区云锦路500号绿地汇中心B座802室  
200232

Phone: +86 21 33686220

Email: [sales.china@euresys.com](mailto:sales.china@euresys.com)

## JAPAN

### **Euresys Japan K.K.**

Expert Office Shinyokohama - Nisso Dai 18 Building, Shinyokohama 3-7-18  
Kouhoku-Ku, Yokohama-Shi 222-0033 - Japan

〒222-0033

神奈川県横浜市港北区新横浜3-7-18 日総第18ビル エキスパートオフィス新横浜

Phone: +81 45 594 7259

Email: [sales.japan@euresys.com](mailto:sales.japan@euresys.com)

More at [www.euresys.com](http://www.euresys.com)

