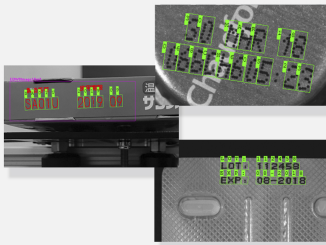


EasyOCR2

Industrial Optical Character Recognition Library



At a Glance

- Optimized for reading short texts such as part numbers, serial numbers, expiry dates, manufacturing dates, lot codes, ...
- Innovative segmentation algorithm to automatically locate texts in the image based on expected character size and text topology
- Full support for text rotation (360 degrees)
- Able to read severely degraded characters: support for character fragmentation and uneven lighting
- Learning of character database from one or multiple TrueType Font (ttf) file(s)
- Assisted learning of character database from sample images
- Character database management: adding characters; saving, loading database

Benefits

Open eVision Studio: Evaluation, prototyping and development tool

Open eVision Studio is the evaluation, prototyping and development tool of Open eVision. Its intuitive graphical user interface allows you to call and immediately see the result of any of eVision's functions. A scripting function generates the corresponding code, which can then be copied and pasted into your application.

Open eVision Studio is free (when using Open eVision 2.0 and above) and can be downloaded to evaluate the performance of Open eVision.

EasyOCR2 Description

EasyOCR2 is a font-dependent printed character reader. It has been designed to read short texts such as part numbers, serial numbers, expiry dates, manufacturing dates, lot codes, ... printed on labels or directly on parts.

Segmentation

EasyOCR2 uses an advanced novel algorithm to locate the texts to read in the image. The topology of the text to detect (number of lines, words and characters) can be freely set by the user.

Character type specification

The character type (letter, digit, symbol, ...) of each character can be specified to improve the recognition speed and rate.

Full support for text rotation (360 degrees)

Assisted learning

When learning from sample images, an interactive tool available in Open eVision Studio is used to identify samples of each character, allow the library to learn them and save the resulting font file.

Support for TrueType Font (ttf) files

EasyOCR2 requires training the font to be recognized. This can be done either from sample images or from standard .ttf (True Type Font) files. This makes the recognition flexible, fast and reliable.

Choose the most suitable Licensing System

- Open eVision Dongle-based Licenses: Dongle-based Licenses offer the flexibility to be transferred from a PC to another. To purchase a Dongle-based License, select one of the Euresys dongles (USB or Parallel) plus the license(s) to be stored on this dongle. Licenses are delivered as activation codes, which are stored on the dongles.
- Open eVision Software-based Licenses: Software-based licenses do not require any dongle, they are linked to the PC on which they have been activated. Licenses are delivered as activation codes and can be managed online.

Applications

Machine Vision for the General Manufacturing Industries

- Product identification for traceability

Machine Vision for the Printing Industry

- Label and packaging inspection: Inspection of the quality of the printing of characters and codes

Specifications

Software

Host PC Operating System

- Open eVision is a set of 32-bit and 64-bit libraries that require a processor compatible with the SSE2 instruction set.
 - The EasyDeepLearning library is only available in the 64-bit Open eVision library.
 - Open eVision can be used on the following operating systems:
 - Windows 10 (32- and 64-bits)
 - Windows 8 (32- and 64-bits)
 - Windows 7 (32- and 64-bits)
 - Since Open eVision 2.6, discontinued support of:
 - Windows Vista 32-bits Service Pack 1
 - Windows XP 32-bits Service Pack 3
 - Windows Embedded Standard 2009 32-bits
 - The Open eVision installer does not allow installation on virtual machines.
 - Minimum requirements:
 - RAM: 8 GB
 - Display size: 800 x 600. 1280 x 1024 recommended.
 - Color depth: 16 bits. 32 bits recommended.
 - Between 100 MB and 2 GB free hard disk space for libraries, depending on selected options.
-

APIs

- Supported Integrated Development Environments and Programming Languages:
 - Microsoft Visual Studio .NET 2003 SP1 (C++)
 - Microsoft Visual Studio 2005 SP1 (C++, C#, VB .NET, C++/CLI)
 - Microsoft Visual Studio 2008 SP1 (C++, C#, VB .NET, C++/CLI)
 - Microsoft Visual Studio 2010 (C++, C#, VB .NET, C++/CLI)
 - Microsoft Visual Studio 2012 (C++, C#, VB .NET, C++/CLI)
 - Microsoft Visual Studio 2013 (C++, C#, VB .NET, C++/CLI)
 - Microsoft Visual Studio 2015 (C++, C#, VB .NET, C++/CLI)
 - Microsoft Visual Studio 2017 (C++, C#, VB .NET, C++/CLI)
- Since Open eVision 2.6, discontinued support of:
 - Microsoft Visual Studio 6.0 SP6 (C++, Basic)
 - Borland C++ Builder 6.0 update 4 (C++)
 - CodeGear C++ Builder 2009 (C++)
 - CodeGear Delphi 2009 (Object Pascal)
 - Embarcadero RAD Studio XE4 (C++, Object Pascal)
 - Embarcadero RAD Studio XE5 (C++, Object Pascal)

Ordering Information

Product code - Description

- 4179 - Open EasyOCR2 for USB dongle
- 4229 - Open EasyOCR2 for PAR dongle
- 4279 - Open EasyOCR2 for soft-based licensing

Optional accessories

- 6512 - eVision/Open eVision USB Dongle (empty)
 - 6513 - eVision/Open eVision Parallel Dongle (empty)
-



AMERICA

Euresys Inc.

27126-B Paseo Espada - Suite 704
San Juan Capistrano, CA 92675 - United States

Phone: +1 949 743 0612

Email: sales.americas@euresys.com

EMEA

Euresys SA

Liège Science Park - Avenue du Pré Aily, 14
4031 Angleur - Belgium

Phone: +32 4 367 72 88

Email: sales.europe@euresys.com

EMEA

Sensor to Image GmbH

Lechtorstrasse 20 -
86956 Schongau - Germany

Phone: +49 8861 2369 0

Email: sales.europe@euresys.com

ASIA

Euresys Pte. Ltd.

750A Chai Chee Road - #07-15 Viva Business Park
Singapore 469001 - Singapore

Phone: +65 6445 4800

Email: sales.asia@euresys.com

CHINA

Euresys Shanghai Liaison Office

Unit 802, Tower B, Greenland The Center - No.500 Yunjin Road, Xuhui District
200232 Shanghai - China

Euresys上海联络处

上海市徐汇区云锦路500号绿地汇中心B座802室
200232

Phone: +86 21 33686220

Email: sales.china@euresys.com

JAPAN

Euresys Japan K.K.

Expert Office Shinyokohama - Nisso Dai 18 Building, Shinyokohama 3-7-18
Kouhoku-Ku, Yokohama-Shi 222-0033 - Japan

〒222-0033

神奈川県横浜市港北区新横浜3-7-18 日総第18ビル エキスパートオフィス新横浜

Phone: +81 45 594 7259

Email: sales.japan@euresys.com

More at www.euresys.com

