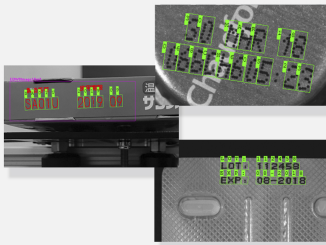




# EasyOCR

Optical character recognition library



## At a Glance

- Teachable character recognition for the most reliable and fastest recognition
- Invariant to character size
- Tolerant to poorly printed, broken characters
- "Connected" characters separation
- Pre-defined fonts included

## Benefits

### Open eVision Studio: Evaluation, prototyping and development tool

Open eVision Studio is the evaluation, prototyping and development tool of Open eVision. Its intuitive graphical user interface allows you to call and immediately see the result of any of eVision's functions. A scripting function generates the corresponding code, which can then be copied and pasted into your application.

Open eVision Studio is free (when using Open eVision 2.0 and above) and can be downloaded to evaluate the performance of Open eVision.

### EasyOCR Description

EasyOCR is a font-dependent printed character reader based on a template matching algorithm. It has been designed to read any kind of short text (part numbers, serial numbers, expiry dates, manufacturing dates, lot codes, ...) printed on labels or directly on parts.

### Training

EasyOCR requires training the font to be recognized. It is able to learn from sample images all possible characters to be read. This makes the recognition extremely flexible, fast and reliable.

The training phase involves an interactive application used to show samples of the characters and allow the library to learn and store them in a font file. Moreover, EasyOCR provides the means for you to write your own, custom, font editor.

EasyOCR also comes with three standard pre-learned font files for the standard OCR-A, OCR-B and Semi fonts.

### Choose the most suitable Licensing System

- Open eVision Dongle-based Licenses: Dongle-based Licenses offer the flexibility to be transferred from a PC to another. To purchase a Dongle-based License, select one of the Euresys dongles (USB or Parallel) plus the license(s) to be stored on this dongle. Licenses are delivered as activation codes, which are stored on the dongles.
- Open eVision Software-based Licenses: Software-based licenses do not require any dongle, they are linked to the PC on which they have been activated. Licenses are delivered as activation codes and can be managed online.

## Applications

### Machine Vision for the General Manufacturing Industries

- Product identification for traceability

### Machine Vision for the Printing Industry

- Label and packaging inspection: Inspection of the quality of the printing of characters and codes

## Specifications

### Software

---

#### Host PC Operating System

- Open eVision is a set of 32-bit and 64-bit libraries that require a processor compatible with the SSE2 instruction set.
  - The EasyDeepLearning library is only available in the 64-bit Open eVision library.
  - Open eVision can be used on the following operating systems:
    - Windows 10 (32- and 64-bits)
    - Windows 8 (32- and 64-bits)
    - Windows 7 (32- and 64-bits)
  - Since Open eVision 2.6, discontinued support of:
    - Windows Vista 32-bits Service Pack 1
    - Windows XP 32-bits Service Pack 3
    - Windows Embedded Standard 2009 32-bits
  - The Open eVision installer does not allow installation on virtual machines.
  - Minimum requirements:
    - RAM: 8 GB
    - Display size: 800 x 600. 1280 x 1024 recommended.
    - Color depth: 16 bits. 32 bits recommended.
    - Between 100 MB and 2 GB free hard disk space for libraries, depending on selected options.
- 

#### APIs

- Supported Integrated Development Environments and Programming Languages:
    - Microsoft Visual Studio .NET 2003 SP1 (C++)
    - Microsoft Visual Studio 2005 SP1 (C++, C#, VB .NET, C++/CLI)
    - Microsoft Visual Studio 2008 SP1 (C++, C#, VB .NET, C++/CLI)
    - Microsoft Visual Studio 2010 (C++, C#, VB .NET, C++/CLI)
    - Microsoft Visual Studio 2012 (C++, C#, VB .NET, C++/CLI)
    - Microsoft Visual Studio 2013 (C++, C#, VB .NET, C++/CLI)
    - Microsoft Visual Studio 2015 (C++, C#, VB .NET, C++/CLI)
    - Microsoft Visual Studio 2017 (C++, C#, VB .NET, C++/CLI)
  - Since Open eVision 2.6, discontinued support of:
    - Microsoft Visual Studio 6.0 SP6 (C++, Basic)
    - Borland C++ Builder 6.0 update 4 (C++)
    - CodeGear C++ Builder 2009 (C++)
    - CodeGear Delphi 2009 (Object Pascal)
    - Embarcadero RAD Studio XE4 (C++, Object Pascal)
    - Embarcadero RAD Studio XE5 (C++, Object Pascal)
-

## Ordering Information

---

Product code - Description

- 4005 - EasyOCR for USB dongle
  - 4055 - EasyOCR for PAR dongle
  - 4105 - EasyOCR for board licensing
  - 4155 - Open EasyOCR for USB dongle
  - 4205 - Open EasyOCR for PAR dongle
  - 4255 - Open EasyOCR for soft-based licensing
- 

Optional accessories

- 6512 - eVision/Open eVision USB Dongle (empty)
  - 6513 - eVision/Open eVision Parallel Dongle (empty)
-



## AMERICA

### **Euresys Inc.**

27126-B Paseo Espada - Suite 704  
San Juan Capistrano, CA 92675 - United States  
Phone: +1 949 743 0612  
Email: sales.americas@euresys.com

## EMEA

### **Euresys SA**

Liège Science Park - Avenue du Pré Aily, 14  
4031 Angleur - Belgium  
Phone: +32 4 367 72 88  
Email: sales.europe@euresys.com

## EMEA

### **Sensor to Image GmbH**

Lechtorstrasse 20 -  
86956 Schongau - Germany  
Phone: +49 8861 2369 0  
Email: sales.europe@euresys.com

## ASIA

### **Euresys Pte. Ltd.**

750A Chai Chee Road - #07-15 Viva Business Park  
Singapore 469001 - Singapore  
Phone: +65 6445 4800  
Email: sales.asia@euresys.com

## CHINA

### **Euresys Shanghai Liaison Office**

Unit 802, Tower B, Greenland The Center - No.500 Yunjin Road, Xuhui District  
200232 Shanghai - China  
Euresys上海联络处  
上海市徐汇区云锦路500号绿地汇中心B座802室  
200232  
Phone: +86 21 33686220  
Email: sales.china@euresys.com

## JAPAN

### **Euresys Japan K.K.**

Expert Office Shinyokohama - Nisso Dai 18 Building, Shinyokohama 3-7-18  
Kouhoku-Ku, Yokohama-Shi 222-0033 - Japan  
〒222-0033  
神奈川県横浜市港北区新横浜3-7-18 日総第18ビル エキスパートオフィス新横浜  
Phone: +81 45 594 7259  
Email: sales.japan@euresys.com

More at [www.euresys.com](http://www.euresys.com)

