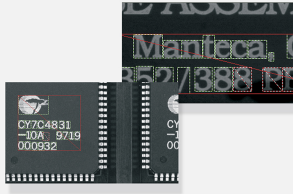


EasyOCV

Optical character verification library

At a Glance



- Comprehensive character verification with automatic training
- Grayscale analysis
- Text and character-level inspection
- Contrast, position and shape defect detection

Benefits

Open eVision Studio: Evaluation, prototyping and development tool

Open eVision Studio is the evaluation, prototyping and development tool of Open eVision. Its intuitive graphical user interface allows you to call and immediately see the result of any of eVision's 2D image processing functions. A scripting functionality generates the corresponding code, which can then be copied and pasted into your application.

Open eVision Studio is free (when using Open eVision 2.0 and above) and does not require any license.

Just click on [DOWNLOAD OPEN EVISION STUDIO](#) and install Open eVision. Sample images, manuals and sample programs are included.

EasyOCV Description

EasyOCV is an optical character verification tool used for mark inspection. It provides automatic training of the model, adjustable acceptance levels and a robust gray-scale analysis. EasyOCV is suitable for various mark inspection and label printing verification applications. It can detect blurred, misaligned, distorted or double marks, extra or missing ink, missing characters or reversed marks as well as contrast problems.

Training

EasyOCV first requires training on the particular marking. During this phase, a good-quality template (golden template) is presented to the system. An interactive utility allows defining the structure of the template and related acceptance criteria, in details. The template learnt can be saved for later use.

EasyOCV supports the use of several good-quality templates to help with the determination of the acceptance criteria.

Inspection

When a template model is ready, the inspection may take place. EasyOCV first locates the marking in the image, allowing it to be translated, rotated and re-scaled or even sheared with respect to the template. After location, grey-level and geometric comparisons are performed and a series of matching scores, called quality indicators, are computed. When these fall outside of given acceptance intervals, a defect warning is reported.

Neo Licensing System

- Neo is the new Licensing System of Euresys. It is reliable, state-of-the-art, and is now available to store Open eVision and eGrabber licenses.

- Neo allows you to choose where to activate your licenses, either on a Neo Dongle or in a Neo Software Container. You buy a license, you decide later.
- Neo Dongles offer a sturdy hardware and provide the flexibility to be transferred from a computer to another.
- Neo Software Containers do not need any dedicated hardware, and instead are linked to the computer on which they have been activated.
- Neo ships with its own, dedicated, Neo License Manager, which comes in two flavours: an intuitive, easy to use, Graphical User Interface and a Command Line Interface that allows for easy automation of Neo licensing procedures.

Applications

Machine Vision for the Electronic Manufacturing Industry

- High speed image acquisition for AOI, 3D SPI, 3D lead/ball inspection machines.
- Very high resolution line-scan image acquisition for Flat Panel Display inspection and solar cell inspection

Machine Vision for the General Manufacturing Industries

- High frame rate image acquisition for inspection machines
- Line-scan image acquisition for surface inspection machines
- Line-scan image acquisition for textile inspection

Machine Vision for the Printing Industry

- High speed line-scan image acquisition for printing inspection machines

Video Acquisition and Recording

- High-frame-rate video acquisition for motion analysis and recording

Specifications

Software

Host PC Operating System

- Open eVision is a set of 32-bit and 64-bit libraries that require an Intel compatible processor with the SSE4 instruction set or an ARMv8-A compatible processor.
- The Deep Learning Bundle is only available in the 64-bit Open eVision library.
- Open eVision can be used on the following operating systems:
 - Windows 11 (64-bits)
 - Windows 10 (32- and 64-bits)
 - Windows 8 (32- and 64-bits)
 - Windows 7 (32- and 64-bits)
 - Linux 64 bits (x86-64 and ARMv8-A) with a glibc version greater or equal to 2.18
- Since Open eVision 2.6, discontinued support of:
 - Windows Vista 32-bits Service Pack 1
 - Windows XP 32-bits Service Pack 3
 - Windows Embedded Standard 2009 32-bits
- Remote connections
 - Remote connections are allowed using remote desktop, TeamViewer or any other similar software.
- Virtual machines
 - Linux virtual machines are supported. Microsoft Hyper-V and Oracle VirtualBox hypervisors have been successfully tested.
 - Windows virtual machines are not supported.
- Minimum requirements:
 - 2 GB RAM to run an Open eVision application
 - 8 GB RAM to compile an Open eVision application
 - Between 100 MB and 2 GB free hard disk space for libraries, depending on selected options.

APIs

- Supported Integrated Development Environments and Programming Languages:
 - Microsoft Visual Studio 2008 SP1 (C++, C#, VB .NET, C++/CLI)
 - Microsoft Visual Studio 2010 (C++, C#, VB .NET, C++/CLI)
 - Microsoft Visual Studio 2012 (C++, C#, VB .NET, C++/CLI)
 - Microsoft Visual Studio 2013 (C++, C#, VB .NET, C++/CLI)
 - Microsoft Visual Studio 2015 (C++, C#, VB .NET, C++/CLI)
 - Microsoft Visual Studio 2017 (C++, C#, VB .NET, C++/CLI)
 - Microsoft Visual Studio 2019 (C++, C#, VB .NET, C++/CLI)
 - Microsoft Visual Studio 2022 (C++, C#, VB .NET, C++/CLI)
 - QtCreator 4.15 with Qt 5.12
 - Since Open eVision 2.5.1, discontinued support of:
 - Borland C++ Builder 6.0 update 4 (C++)
 - CodeGear Delphi 2009 (Object Pascal)
 - CodeGear C++ Builder 2009 (C++)
 - Microsoft Visual Studio 6.0 SP6 (C++, Basic)
 - ActiveX API
 - Since Open eVision 2.4.1, discontinued support of:
 - Embarcadero RAD Studio XE4 and XE5 (C++, Object Pascal, 32 bits only)
-

Ordering Information

Optional accessories

- 6512 - eVision/Open eVision USB Dongle (empty)
 - 6513 - eVision/Open eVision Parallel Dongle (empty)
 - 6514 - Neo USB Dongle (empty)
-

EMEA

Euresys SA

Liège Science Park - Rue du Bois Saint-Jean, 20
4102 Seraing - Belgium

Phone: +32 4 367 72 88
Email: sales.europe@euresys.com

EMEA

Sensor to Image GmbH

Lechtorstrasse 20 -
86956 Schongau - Germany

Phone: +49 8861 2369 0
Email: sales.europe@euresys.com

AMERICA

Euresys Inc.

27132-A Paseo Espada - Suite 421
San Juan Capistrano, CA 92675 - United States

Phone: +1 949 743 0612
Email: sales.americas@euresys.com

ASIA

Euresys Pte. Ltd.

750A Chai Chee Road - #07-15 ESR BizPark @ Chai Chee
Singapore 469001 - Singapore

Phone: +65 6445 4800
Email: sales.asia@euresys.com

CHINA

Euresys Shanghai Liaison Office

Unit 802, Tower B, Greenland The Center - No.500 Yunjin Road, Xuhui District
200232 Shanghai - China

Euresys 上海联络处

上海市徐汇区云锦路500号绿地汇中心B座802室
200232

Phone: +86 21 33686220
Email: sales.china@euresys.com

CHINA

Euresys Shenzhen Liaison Office

Room 1202 - Chinese Overseas Scholars Venture Building
518057 Shenzhen - China

Euresys 深圳联络处

深圳南山区留学生创业大厦1期1202
518057

Phone: +86 755 86506902
Email: sales.china@euresys.com

JAPAN

Euresys Japan K.K.

Expert Office Shinyokohama - Nisso Dai 18 Building, Shinyokohama 3-7-18, Kohoku
Yokohama 222-0033 - Japan

〒222-0033

神奈川県横浜市港北区新横浜3-7-18 日総第18ビル エキスパートオフィス新横浜

Phone: +81 45 594 7259

Email: sales.japan@euresys.com

More at www.euresys.com

